

# Battery case (Lightweight and high-strength)

■ Production

□ Prototype

□ Development



## ■ Product Features

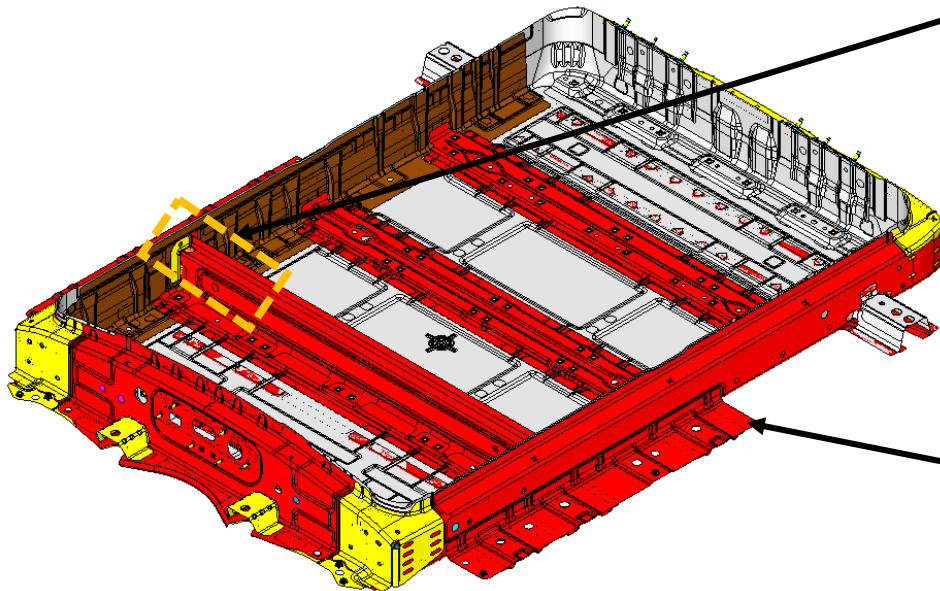
- High strength steel including hot stamping material along with small pitch S/W adopted for the protection of battery.

## ■ Product Technology

- Strength is improved by small pitch S/W (1/2 of original)



spot pitch  
25mm(conventionally)  
⇒10~15mm



- BAT-CASE framework (crossMBR frame)  
Application of higher strength materials  
(590MPa~1.5GPa)